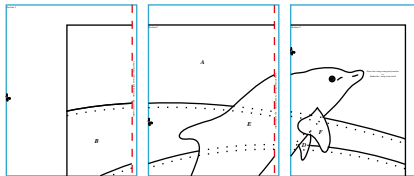


# Patches

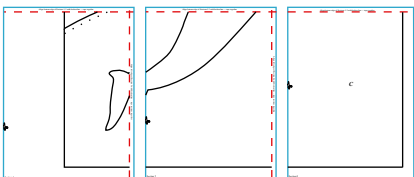
## Placement Guide

### Assembling Placement Guide

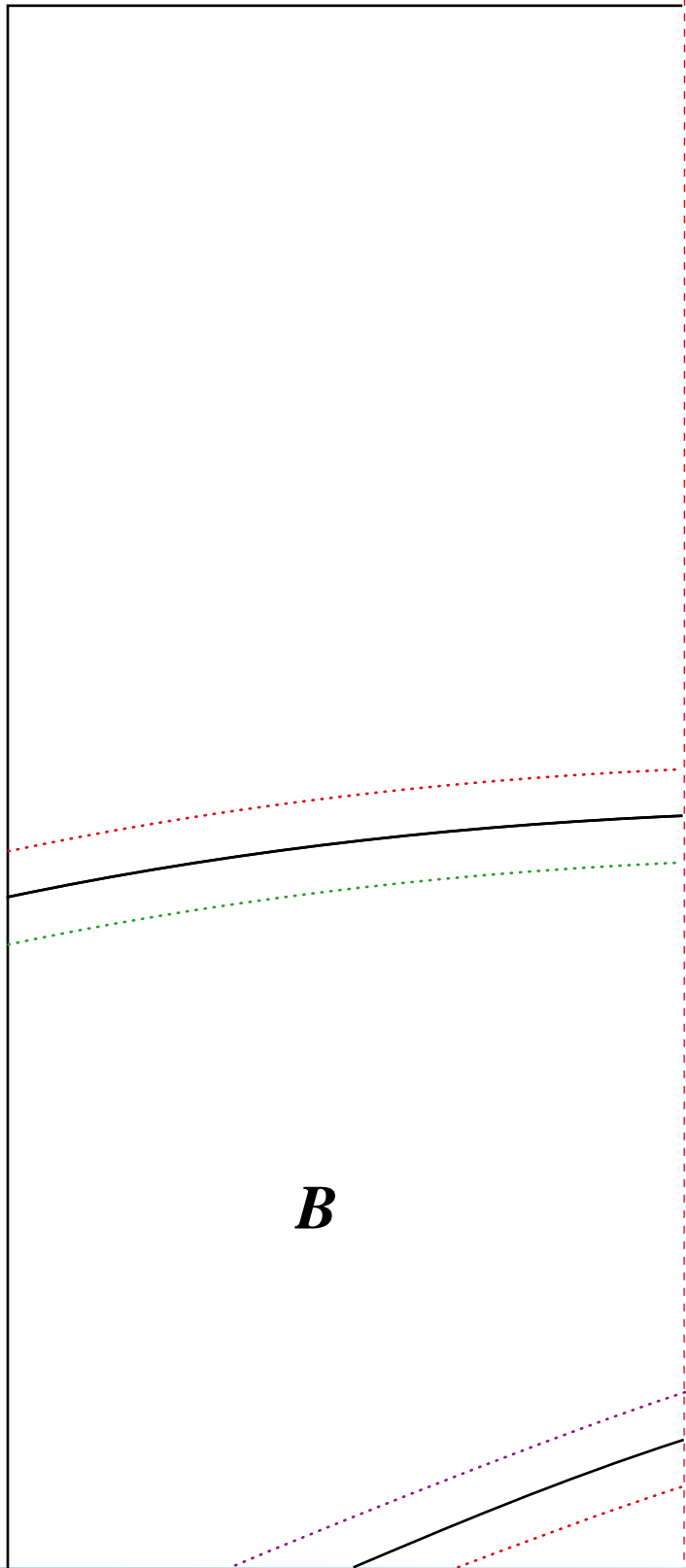
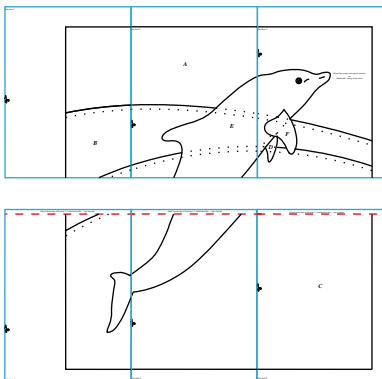
Step 1. Tape Sections 1, 2, and 3 together.



Step 2. Tape Sections 4, 5, and 6 together.



Step 3. Tape Sections 1/2/3 and 4/5/6 together to make actual size Placement Guide.



Align left edge of Section 2 with broken line ... tape sections together

Section 2

**A**

**E**

*Top cutting line for Piece B*

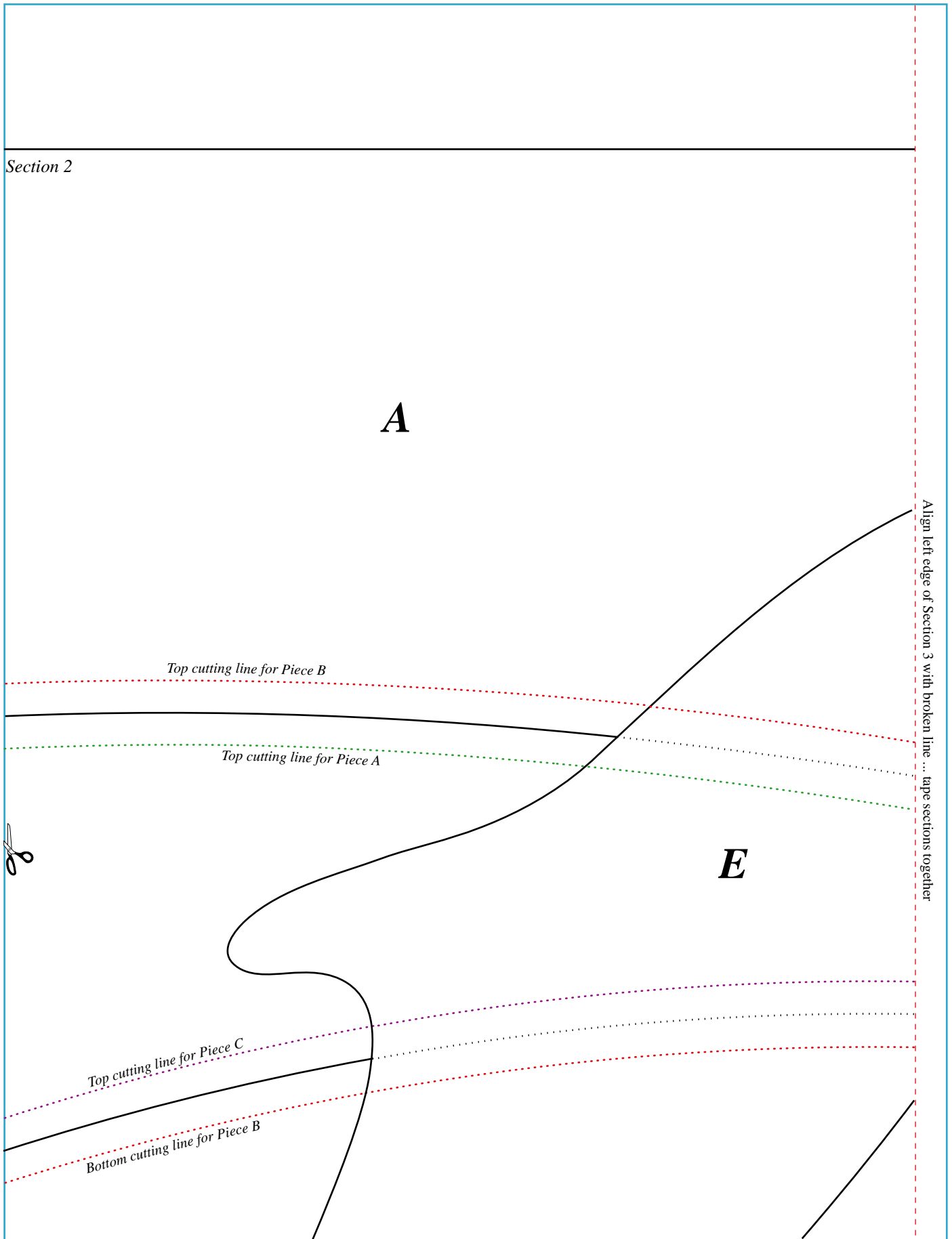
*Top cutting line for Piece A*

*Top cutting line for Piece C*

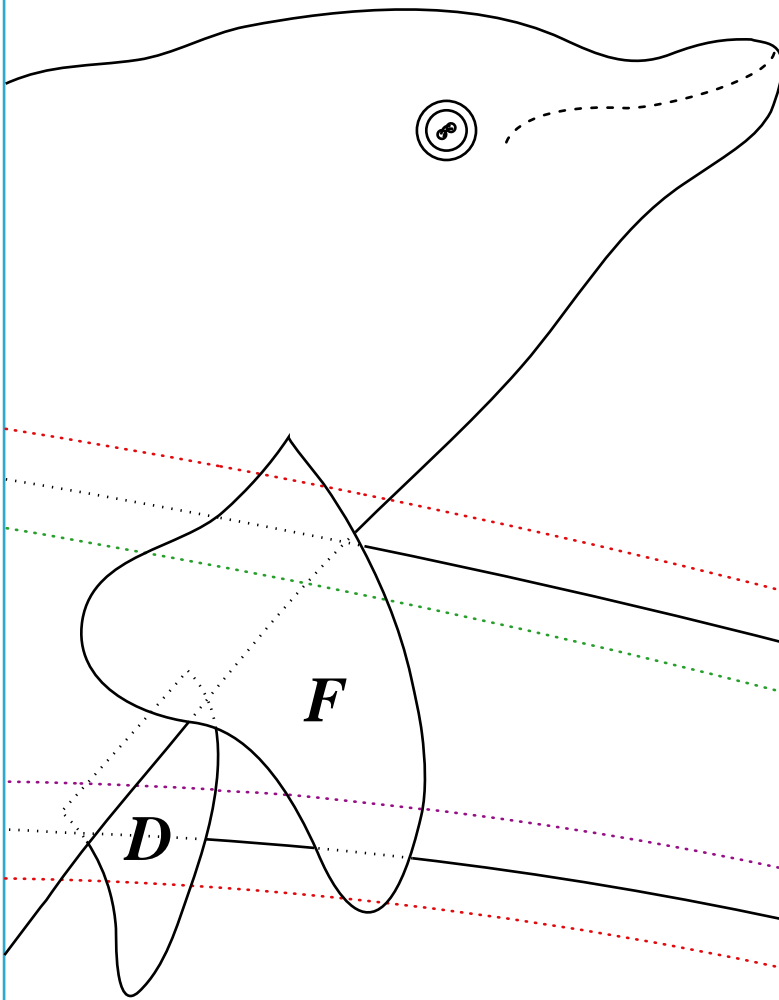
*Bottom cutting line for Piece B*



Align left edge of Section 3 with broken line ... tape sections together



Section 3



*Draw line using waterproof marker  
or  
Embroider using stem stitch*

Align bottom edge of Sections 1-3 with broken line --- tape together

Align left edge of Section 5 with broken line ... tape sections together



Section 4

© Copyright 2003 PROMARK, Inc.

Align bottom edge of Sections 1-3 with broken line --- tape together

Align left edge of Section 6 with broken line ... tape sections together



Section 5

Align bottom edge of Sections 1-3 with broken line --- tape together



*C*